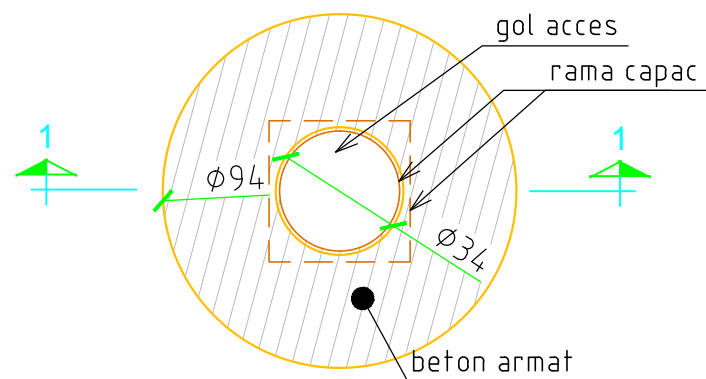


COFRAJ SI ARMARE PLACA PREFABRICATA

Armare placa prefabricata la cota ±0.00

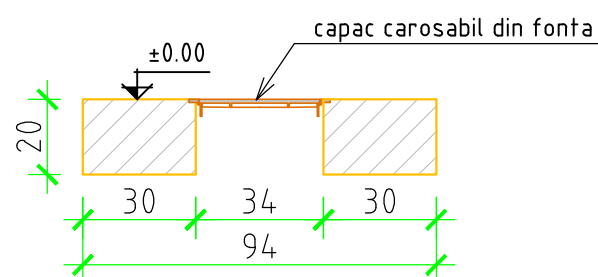
Plan cofraj

SCARA 1:20



Sețiunea 1-1

SCARA 1:20



NOTA:

-Acoperirea nominala cu beton a armaturilor este:
placa exterior 40mm
interior 30mm

-Dimensiunile partiale ale armaturilor sunt date la interior.

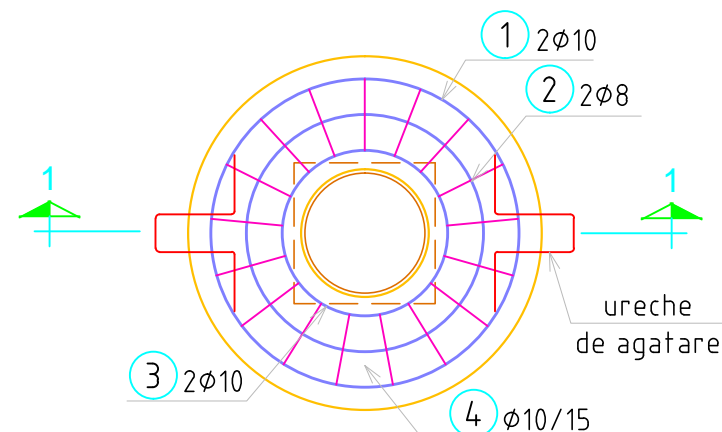
-In functie de zona in care va fi amplasata placa se vor alege urmatoarele clase pentru capacele de inchidere:

capac de inchidere clasa D 400-se va folosi pentru cai de circulatie pe strazi si statii de stationare pentru vehicule rutiere.

capac de inchidere clasa B 125 -se va folosi pentru trotuare, zone pietonale.

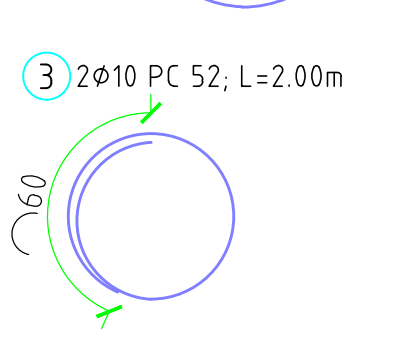
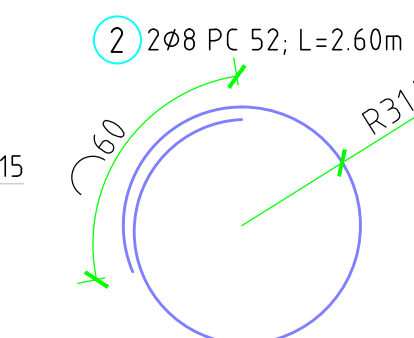
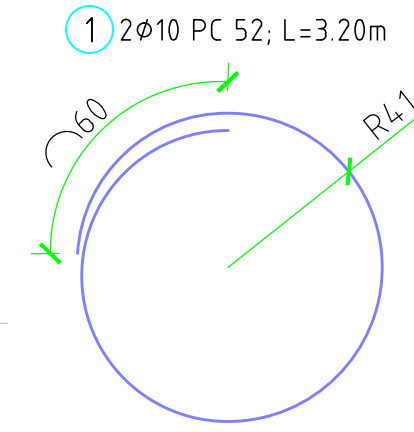
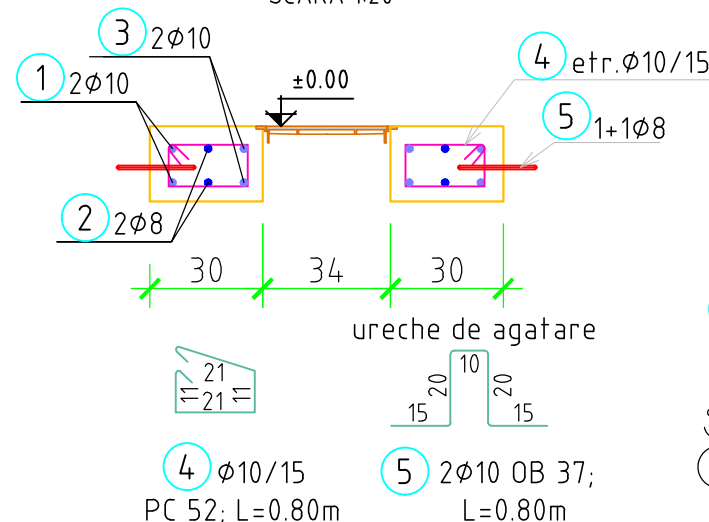
Plan armare

SCARA 1:20



Sețiunea 2-2

SCARA 1:20



Extras de armatura

Marca	ø	Buc	Lungime	OB 37			PC52		
				ø 10	ø 8	ø 10	ø 10	ø 8	ø 10
1	10	2	3.20						6.40
2	8	2	2.60				5.20		
3	10	2	2.00						4.00
4	10	17	0.80						13.60
5	10	2	0.80	1.60					1.60
ml/ø				1.60	5.20		25.60		
kg/ml				0.617	0.395		0.62		
kg/ø				0.9872	2.05		15.80		
TOTAL				kg/buc		1	18		

BETON ARMAT
OTEL BETON

C25/30, XF4, XD3, XC4, Cl0.2, Dmax 16, S3, P4, CEM II/A-S 32.5R
OB 37, PC 52

Rev	Nume	Ver	Aprb	Data	Descriere
-----	------	-----	------	------	-----------

Autoritatea contractanta: **S.C.AQUACARAS S.A. CARAS SEVERIN**



Adresa: P-la Republicii, nr. 7, Resita
Jud. Caras Severin
Tel.: +40 255 212 458
Fax.: +40 255 214 421
E-mail: office@aquacaras.ro

Proiectant: **Consortiu S.C Eptisa Romania S.R.L. si Eptisa Servicios de Ingenieria S.L.**
Sos. Dudești-Pantelimon nr. 42, RAMS center, et. 5, corp A, sector 3, București
Tel.: +40 21 301 14 70
Fax: +40 21 301 14 80
www.eptisa.com



Proiect: **MODERNIZAREA INFRASTRUCTURII DE APA SI APA UZATA IN JUDETUL CARAS SEVERIN - AGLOMERAREA RESITA**

Plansa:

Detaliu tip
Placa din b.a. prefabricata pentru
camin de racord prefabricat din PVC

Desenat: Ing. B. Paraschiv Data: Aprilie 2013
Verificat: Ing. M. Serbanoiu Data: Aprilie 2013
Aprobat: Ing. D. Spiridon Data: Aprilie 2013

Plansa nr. **CS-RE-PT/DA-C-R-01** Revizia **0**

Scara plansa: 1 :20